



QUARTERLY FINANCIAL REPORT TO PARISHIONERS - SEPTEMBER 30, 2017

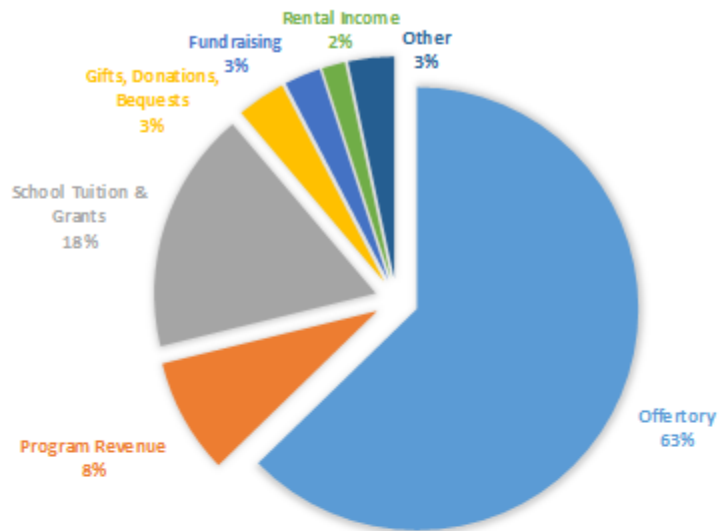
Income Statement

	September 30, 2017 YTD Actual	September 30, 2017 YTD Budget	YTD Budget Variance	September 30, 2016 YTD Actual
Operating Revenues:				
Offertory	\$346,714	\$416,000	(\$69,286)	\$369,258
Program Revenue	46,618	31,971	\$14,647	41,857
School Tuition & Grants	97,556	113,790	(\$16,234)	85,929
Gifts, Donations, Bequests	19,492	40,000	(\$20,508)	84,978
Fundraising Revenue	14,590	31,750	(\$17,160)	49,393
Rental Income	9,223	10,260	(\$1,037)	26,697
Other	18,492	10,450	\$8,042	3,991
Total Operating Revenues	\$ 552,685	\$ 654,221	\$ (101,536)	\$ 662,103
Operating Expenses:				
Personnel Costs	436,900	418,631	(18,269)	426,137
Contracted Services	60,090	69,485	9,395	44,547
Buildings & Occupancy	77,340	79,689	2,349	93,642
Supplies	36,641	28,250	(8,391)	33,793
Program Costs	8,283	11,625	3,342	4,682
Fundraising Costs	4,962	15,438	10,476	21,852
Other	29,179	34,960	5,781	31,354
Total Operating Expenses	\$ 653,395	\$ 658,078	\$ 4,683	\$ 656,007
Excess (Deficiency) of Operating Revenues over Operating Expenses	(100,710)	(3,857)	(96,853)	6,096
Non-operating Revenue (Expense)	\$ 253,173	\$ -	253,173	\$ (74,695)
Excess (Deficiency) of Revenues over Expenses	\$ 152,463	\$ (3,857)	156,320	\$ (68,599)

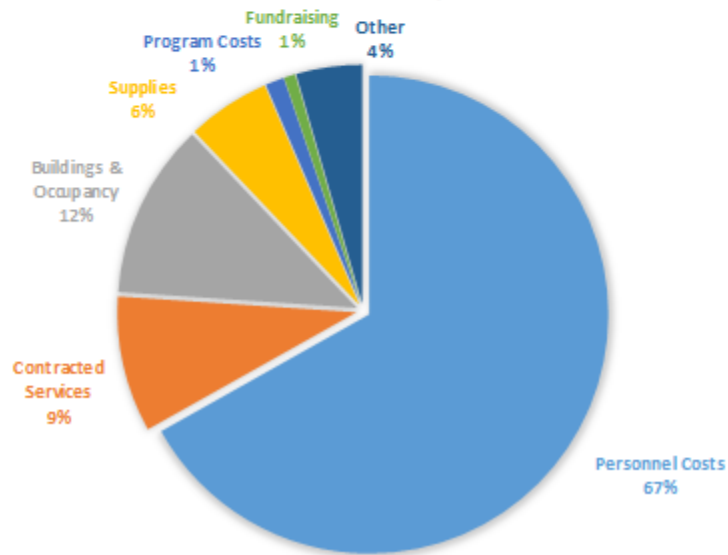
Balance Sheet

Assets		Liabilities and Fund Balance			
	September 30, 2017	September 30, 2016	September 30, 2017	September 30, 2016	
Cash:			Accounts Payable & Accrued Expenses	\$95,146	\$84,460
Operating Accounts	\$218,838	\$492,779	Payroll Liabilities	3,657	4,656
Fundraising	14,684	80,845	Diocesan/Second Collection Liabilities	3,026	14,573
Investments - Designated:			Other	2,600	6,090
Renewals & Replacements	1,629,948	1,335,400	Deferred Tuition & Other Revenue	559,694	501,024
Education	587,207	597,458	Total Liabilities	664,123	610,802
Tuition and Other Receivables	392,779	344,629	Fund Balance	2,181,415	2,241,779
Other	2,082	1,470			
Total Assets	\$2,845,538	\$2,852,581	Total Liabilities & Fund Balance	\$2,845,538	\$2,852,581

**SEPTEMBER 30, 2017 YTD ACTUAL OPERATING
REVENUE \$552,685**



**SEPTEMBER 30, 2017 YTD ACTUAL OPERATING
EXPENSES \$653,395**





OUR VISION IS:

Friends and neighbors joyfully sharing and living the Gospel and the transforming love of Jesus Christ through our Parish Family.

OUR MISSION IS:

To invite and welcome people of all ages, backgrounds and walks of life to embrace and celebrate our vocation:
To be Christ to the world.

SACRAMENTS OF THE CHURCH:

Anointing of the Sick, Baptism, Confirmation, Eucharist, Holy Orders, Matrimony, Penance

OUR MINISTRIES:

Homebound Ministry, Irondequoit Senior Ministries, Legion of Mary, Music Ministry, Social Justice, Saint Vincent DePaul, Stephen Ministries, Youth Ministry

OUR PROGRAMS:

Alpha, Bible Study, Coffee and Catholicism, CYO Basketball, Evangelization, Faith Formation and Intergenerational Sessions, Fall Into Advent, Good Samaritan Transportation, Kidz Camp, Lenten Service Projects, National Catholic Youth Conference, Steve Angrisano Concert, Thanksgiving and Advent Giving

OUR CATHOLIC SCHOOL PRE-KINDERGARTEN, FULL DAY K-5:

German Class, Karate Club, Lego League, Running Club, Science Club, Ski Trip, Spanish Class, Christmas and Spring Concerts, Service Projects, Thanksgiving Blessings Breakfast, Veterans Day Prayer Service, Snowball Dance, Bowling, Muffins with Mom, Doughnuts with Dad, Fall Family Picnic, Rainbow Prayer Service

OUR CELEBRATIONS:

Adoration of the Blessed Sacrament, Christmas, Easter, Funerals, Holy Days, Mass of Remembrance, Pentecost, Rite of Christian Initiation of Adults

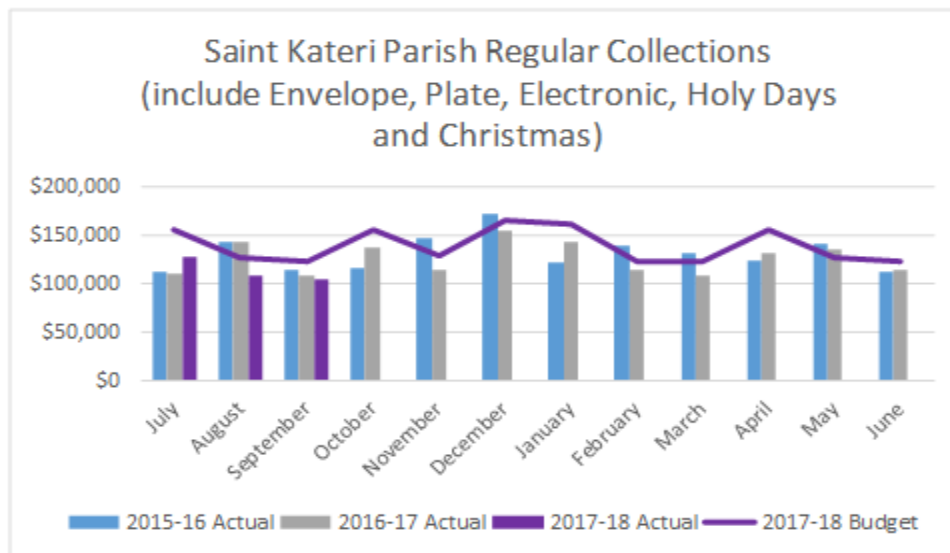
OUR AFFILIATED ORGANIZATIONS:

Angels of Mercy, Boy Scouts, Cub Scouts, 50 and Over Club, Knights of Columbus, Ladies Guild, Men's Club

445 KINGS HIGHWAY S., ROCHESTER, NY 14617 | KATERIIRONDEQUOIT.ORG | P 585-544-8880 F 585-266-1074

Notes:

1. For the three months ending September 30, 2017, offertory decreased 6% compared to the same period last year, and is 17% below budget. The official October 2017 attendance will be available the next quarter.
2. Tuition at Saint Kateri School for September 2017 increased 13.5% consistent with higher enrollment (198 students in Pre Kindergarten through Grade 5). Grants, contingent upon availability, were below budget.
3. Personnel costs were 2.5% higher in 2017 versus 2016 as we welcomed Father Evan Simington to Saint Kateri Parish, offset slightly by other staff turnover.
4. Non-operating Revenue Year to Date includes net proceeds from the sale of the former Saint Salome Church plus interest and increases in market value of investments. Capital improvements were funded by a generous donation of \$10K - designated for boiler controls and handicap accessible doors at Christ the King Church.
5. The parish remains free of debt, managing cash flow prudently to cover the cost of daily operations with revenue from collections, tuition, donations, and grants.



Lori Klafehn, Finance Council Chair 261-4795 Carol Wilke, Director, Finance & Admin. 544-8880